



PennState

Environmental Health and Safety

Research East Building
Mechanical Engineering/EMS Energy Institute
The Pennsylvania State University

Emergency Phone Numbers

EMERGENCY (Police-Fire-Ambulance) 911

University Police 814-863-1111

University Health Services 814-865-6556

Environmental Health and Safety (814) 865-6391

Physical Plant Work Reception Center 814-865-4731

The Pennsylvania State University Emergency Evacuation Plan

Building and Personnel Information

Building Name: Research Building East

Department Name(s): College of Engineering & College of Earth & Mineral Science

Position	Name	Area of Responsibility	Office Phone	Office Address
Building Emergency Coordinator (BEC) <i>(Engineering)</i>	Annette Brown	College of Engineering Safety Monitors & Assistant BEC	863-6272	139 Res East
Alternate BEC <i>(Engineering)</i>	Sally Mills	College of Engineering Safety Monitors & Assistant BEC	863-6075	15 Res East
BEC - EMS	Ronnie Wasco	College of EMS Safety Monitors	863-5384	218 Academic Activities Bldg
Alt BEC - EMS	Xiaoxing Wang	College of EMS Safety Monitors	863-8362	209 Academic Project Bl.
Unit Safety Officer <i>(Engineering)</i>	Mike Houser	College of Engineering	863-8189	101E Hammond
Unit Alternate Safety Officer <i>(Engineering)</i>	Clark Colborn	College of Engineering	865-7137	101 Hammond
Unit Safety Officer – <i>(EMS)</i>	Frank Driscoll **	College of EMS	867-2499	248 Deike Bldg
Unit Alternate Safety Officer <i>(EMS)</i>	Diane Ault	College of EMS	865-7659	248 Deike Bldg
Safety Monitors	Yun Shin <i>(Engineering)</i>	Ground Floor	863-6278	135 Res East
	Annette Brown <i>(Engineering)</i>	1 st Floor	863-6272	139 Res East
	Sarah Mills <i>(Engineering)</i>	Alternate – Ground & 1 st Floors	863-6075	15 Res East
	Xiaoxing Wang <i>(EMS)</i>	2 nd Floor	863-8362	209 Academic Projects
	Ronnie Wasco	Alternate – 2 nd Floor	863-5384	218 Academic Projects Bldg

Special Notes:

**The College of Engineering has primary responsibility for maintaining this plan based on having the largest assigned square footage within the building.*

***The College of Earth & Mineral Science Safety officer is as shown; however, all building-specific concerns about this building should be directed to Safety Monitor, Ronnie Wasco.*

Designated Meeting Site(s) for Building are: **Across Bigler Rd opposite Research East (Alternate for bad weather: Loading Dock C110 at Coal Utilization Building)**

Designated Areas of Refuge for the Building are: **1st & 2nd Floor Stairwell Landings on any staircase**

Copies of this Evacuation Plan are kept in the following locations: **Research Building East Rooms 138, 128 & 211; 218 Academic Projects Building; 101 Hammond, 248 Deike**

Ronnie Wasco to be stationed in Foyer F212 APB to prevent reentry to 2nd floor RE.

Yun Shin to be stationed in Foyer F101 APB to prevent reentry to RE Basement.

Signature of Plan Preparer

8/9/19

Date Prepared

EMS EI RSE PERSONNEL EVACUATION PROCEDURES AND RESPONSIBILITIES

Objectives

There are six objectives to be attained during an APB evacuation. They are:

- 1) Clear 2nd floors of all personnel.
- 2) Identify missing EMS EI personnel.
- 3) Secure the 2nd floor.
- 4) Ensure no one reenters RSE from 2nd floor APB.
- 5) Transfer information to Ronnie Wasco and First Responders.
- 6) Transfer monitor duties to First Responders.

EMS EI RSE personnel are assigned a particular section to clear and secure.

Areas of Refuge

The areas of refuge on the 1st floor are the tops of all stairwells and lobby atrium. If safe to do so, egress the person to the outside. The areas of refuge on the 2nd floor are the tops of the stairwells and lobby atrium. If safe to do so, egress the person through the breezeway into Academic Projects and evacuate to the outside. The area of refuge in the basement is at the bottom of the Academic Projects stairwell. If possible, egress the person up the stairwell to the outside.

General Procedures

If the fire alarm goes off, or you are ordered to evacuate RSE, follow these general procedures:

Evacuate your office leaving the lights on and the door closed and unlocked.

Monitors and back-up monitors: Meet quickly on the 2nd floor and confirm specific duties.

Remind personnel to grab their 'Keys, Coats, and Cash'!

Take note of anything unusual during your egress (e.g., smoke, smells, etc.).
Sweep your assigned floor.

Basement Monitor: Grab the Evacuation Binder from Room 23. Report to the collection area.

2nd Floor Monitor: Grab the Evacuation Binder from outside 204. Sweep the areas and report to the far end of the breezeway in APB.

Assemble directly across Bigler Ave.

Determine if anyone is missing.

Share what you observed with everyone.

Fill out checklists and make notes on observations.

Report what you have observed to Ronnie Wasco.

If the weather is bad, those without other responsibilities shall relocate to the Loading Dock area of CUL. Those with responsibilities will relocate to the Loading dock area of CUL when relieved by First Responders.

Communicate to First Responders that the APB basement, APB 1st floor East exit, basement Loading Dock and APB Breezeway Exit Monitors need to be relieved by their personnel.

Do not return to RSE until given the all clear by the EMS EI Safety Officer, EHS personnel, or First Responders.

INGRESS TO RSE

There are four ways to enter APB:

- 1) To the 1st floor from the west at the main entrance, across from APB.
- 2) From the south at the Research East loading dock.
- 3) From the west through the 2nd floor breezeway.
- 4) From the basement from APB.

Four Door Monitors will be assigned to cover these entries. They will take up positions in the following locations:

- 1) The basement of APB where RSE and APB connect.
- 2) The breezeway area of APB.
- 3) Outside of the basement loading dock of RSE.
- 4) The east exit of 1st floor APB.

EMS EI RSE Personnel Specific Procedures

If for any reason the following personnel cannot fulfill their duties (e.g., they're across campus, out sick, etc.), all EMS EI RSE personnel should be prepared to carry out another person's duties. Communicate to others the duties you will perform. **DO NOT PERFORM THESE DUTIES IF BY DOING SO YOU PUT YOURSELF AT RISK!**

Xiaoxing Wang: Grab the Evacuation Binder from outside 204. Sweep the 2nd floor starting at rooms 204/218 moving counterclockwise through the floor ending in the 2nd floor atrium. Take up position in the APB end of the breezeway ensuring no one ingresses RSE from that position. Fill out as much of the checklist as possible. Wait there until relieved by First Responders. Egress the build and proceed to the collection area and report.

Dongxiang Wang: Back-up Sweeper to Xiaoxing Wang.

1. Critical Operations Shut Down Procedures and Personnel Assigned These Responsibilities

- None

2. Listing of Individuals Requiring Evacuation Assistance

- None

Evacuation Quick Reference Card

Emergency Contacts:

911 (Police- Fire –Ambulance)

University Police: 863-1111

Environmental Health and Safety: 865-6391

OPP Work Reception Center: 865-4731

Evacuation Contacts:

Bldg / Dept Emergency Coordinator:

Ron Wasco 863-5384

Safety Monitor: Annette Brown

Work Unit Name

Evacuation Quick Reference

- Quickly exit in a calm manner.
- Close doors – **Do Not** lock
- Assist visitors to evacuate
- **Do Not** use elevators
- Report to designated meeting site
- **Do Not** reenter the building until advised by emergency personnel or safety monitor

Research Building East designated meeting site: Across Bigler Road opposite Research East (Alternate for bad weather: Loading Dock C110 at Coal Utilization Building)

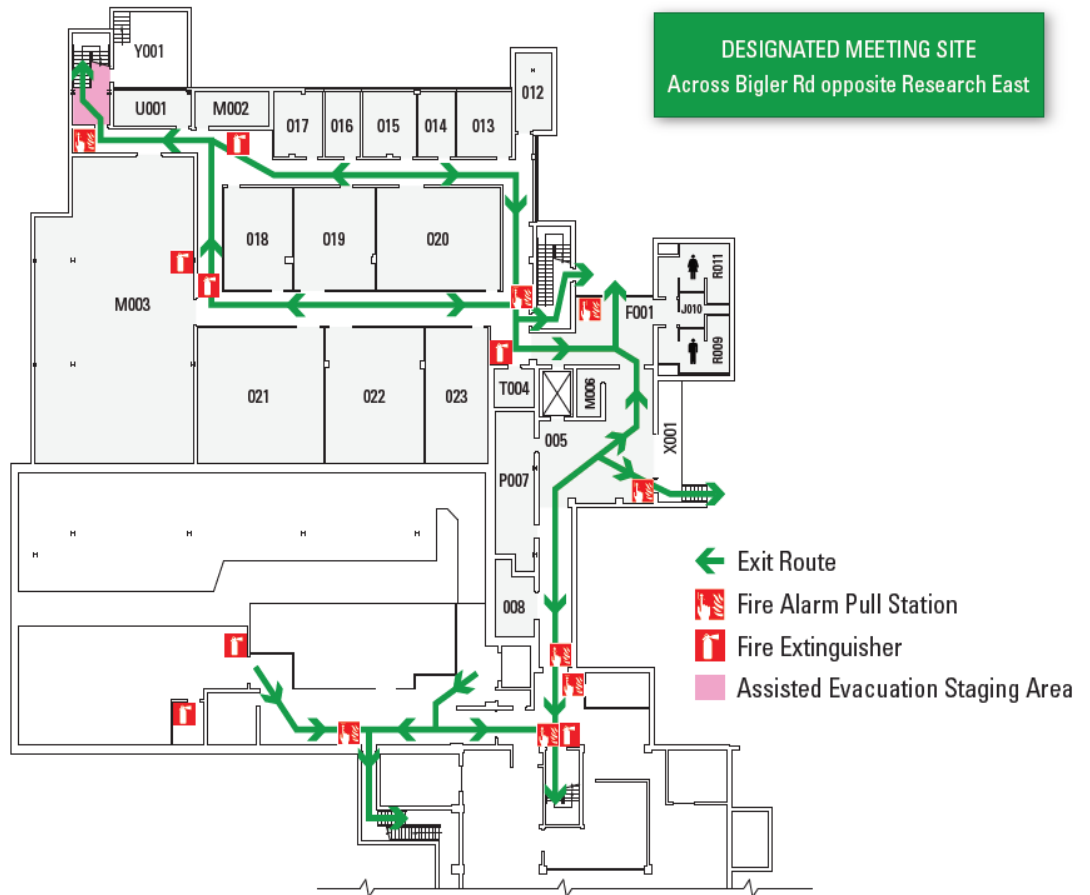
Building	Room #	Last Name	First Name	Affiliation
Research East	13	Dudash	Joshua	
Research East	13	Li	Jihang	
Research East	13	Mills	Sarah	
Research East	13	O'Meara	Bridget	
Research East	14	Vacant		
Research East	15	Chen	Xiaoling	
Research East	15	Culler	Wyatt	
Research East	15	Frederick	Mark	
Research East	15	Makwana	Anand	
Research East	15	Meeghan	Michael	
Research East	15	Tyagi	Ankit	
Research East	16	Miyagi	Kinya	
Research East	17	Krieger	Melissa	
Research East	17	Mokhtari	Kasra	
Research East	19	Khichar	Mayank	
Research East	19	Patidar	Lalit	
Research East	19	Zhang	Kaiqiang	
Research East	20	Chatterjee	Tanusree	
Research East	23	Vander Wal	Randy	
Research East	104	Yetter	Richard	
Research East	105/106	Xuan	Yuan	
Research East	109	Micci	Michael	
Research East	110	Jo	Gunwoo	
Research East	110	Zhang	Weiwei	
Research East	111/112	O'Connor	Jackie	
Research East	113/114	Thynell	Stefan	
Research East	117	Abuzaid	Mohamed	
Research East	117	Biswas	Saptarshi	
Research East	117	Cook	Ian	
Research East	117	Czesak	Nicholas	
Research East	117	Falcone	James	
Research East	117	Gallucci	Sergio	
Research East	117	Knecht	Sean	
Research East	117	Lassman	Josh	
Research East	117	Palomino	Jorge	
Research East	117	Wilson	Michael	
Research East	128	Vacant		
Research East	129	Turns	Stephen	

Research East	130	Connell	Terry	
Research East	130	Risha	Grant	
Research East	131	Linevsky	Milton	
Research East	131	Vacant		
Research East	132	Santavicca	Domenic	
Research East	133	Vacant		
Research East	134	Vacant		
Research East	135	Shin	Yun Kyung	
Research East	136/137	Stockar	Stephanie	
Research East	138	Lotfi	Roghayyeh	
Research East	138	Yilmaz	Dundar	
Research East	139	Newby	Mary	
Research East	140	Haworth	Daniel	
Research East	204	Ayala	Luis	
Research East	204	Vacant		
Research East	205	Vander Wal	Randy	
Research East	206	Alqahtani	Mohmmad	
Research East	209	Eser	Semih	
Research East	210	Kumal	Raju	
Research East	211	Wang	Xiaoxing	
Research East	212	Vacant		
Research East	212	Vacant		
Research East	213	Huang	Qiming	
Research East	213	Lin	Tiejun	
Research East	214	Liu	Na	
Research East	214	Shu	Biao	
Research East	215	Wang	Xiaoxing	
Research East	216	Wang	Xiaoxing	
Research East	217	Wang	Xiaoxing	
Research East	218	Wang	Xiaoxing	
Research East	219	Wang	Xiaoxing	
Research East	222	Wang	Xiaoxing	
Research East	223	Hossain	Jamil	
Research East	223	Paes	Paulo	
Research East	223	Shabnam	Sharmin	
Research East	223	Shetty	Sarthak	
Research East	223	Verma	Suyash	
Research East	224	Ferreyro Fernandez	S.	
Research East	224	Han	Jun	
Research East	224	Kazmouz	Samuel	

Research East	224	Paul	Chandan	
Research East	224	Sircar	Arpan	
Research East	228	Morrison	Joel	
Research East	229	Vacant		
Research East	229	Vacant		
Research East	229	Vacant		
Research East	230	Mockensturm	Eric	
Research East	231	Mercurio	Nick	
Research East	232	Santoro	Robert	
Research East	233	Imren	Abdurrahmen	
Research East	234	Damirchi	Behzad	
Research East	234	Dasgupta	Nabankur	
Research East	235	Hahn	Seung Ho	
Research East	235	Jain	Abhishek	
Research East	236	Ashraf	Chowdhury	
Research East	236	Mohajerani	Farzad	
Research East	237	Jonayat	A S M	
Research East	238	Feng	Ming	
Research East	238	Liu	Yu	
Research East	239	Andreoli	Sara	
Research East	239	Guo	Xiao	
Research East	240	Van Duin	Adri	



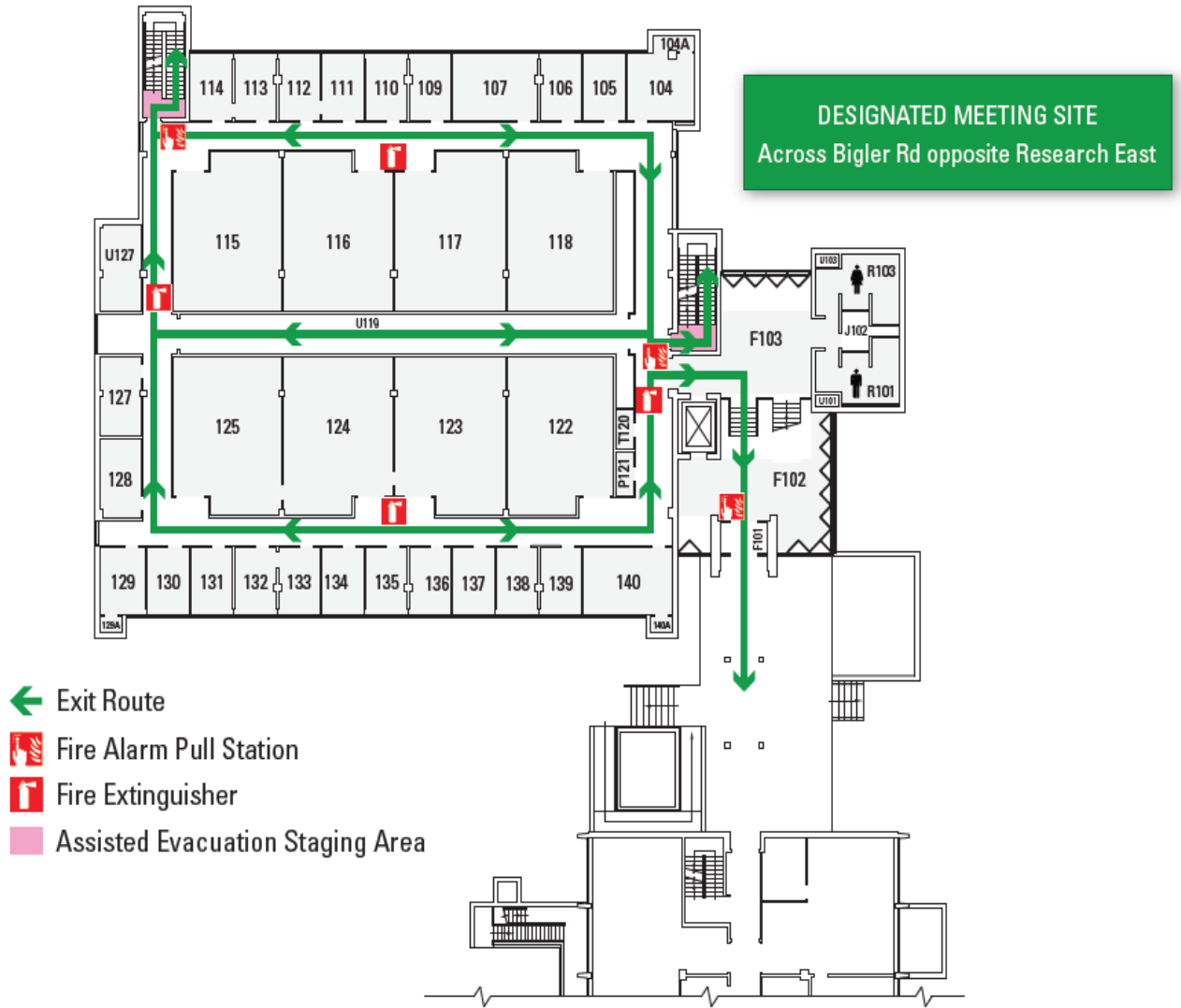
EVACUATION ROUTE



Research Building East - Basement



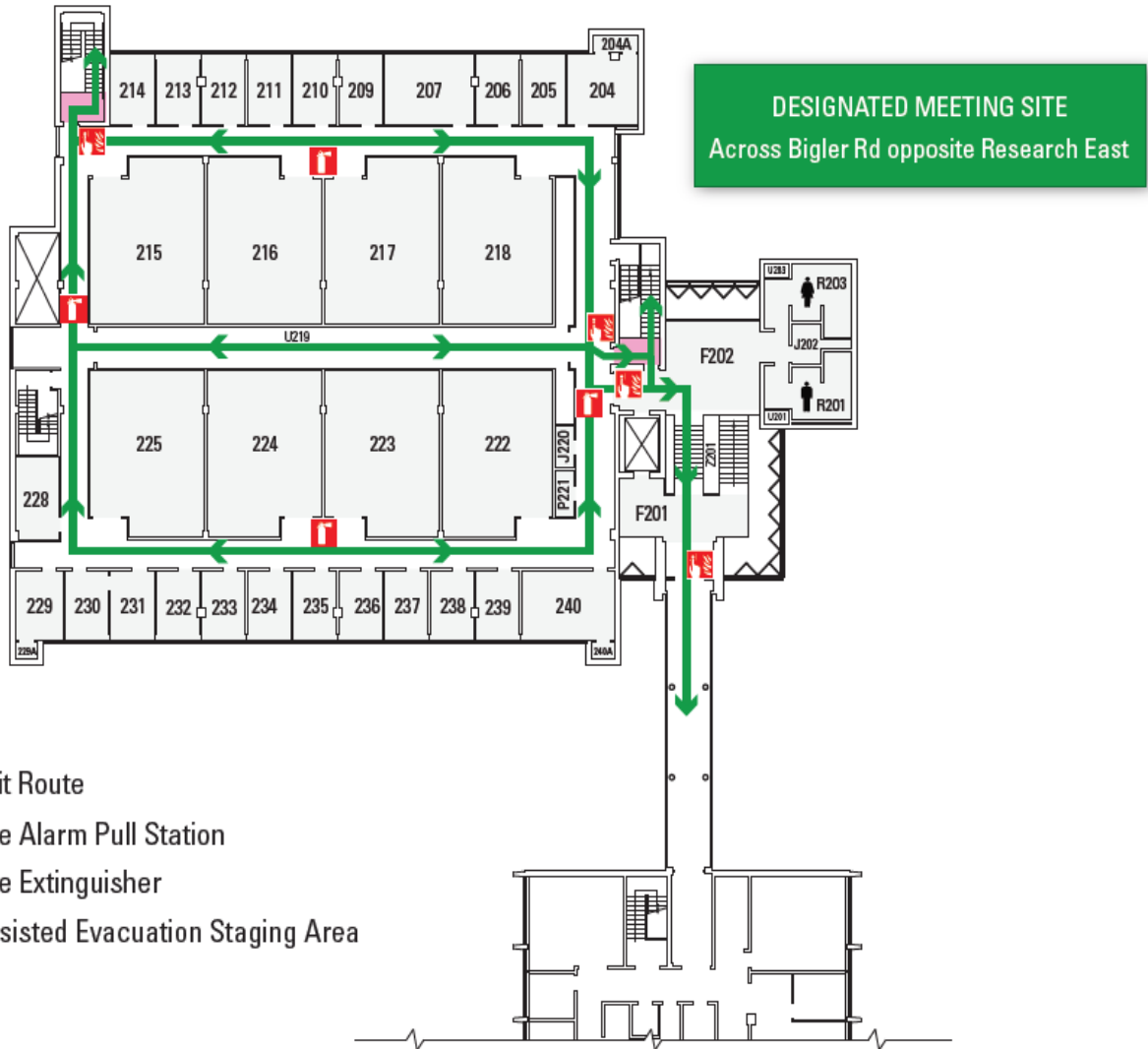
EVACUATION ROUTE



Research Building East - 1st Floor



EVACUATION ROUTE



Research Building East - 2nd Floor