



Hosler
Emergency Evacuation Plan
The Pennsylvania State University

Emergency Phone Numbers

EMERGENCY (Police-Fire-Ambulance) 911

University Police 814-863-1111

University Health Services 814-865-6556

Environmental Health and Safety (814) 865-6391

Physical Plant Work Reception Center 814-865-4731

Building and Personnel Information

Building Name: HOSLER

Department Name(s): ENERGY and MINERAL ENGINEERING (EME)

| Position | Name | Area of Responsibility | Phone Office/Cell | Office Address |
|---|---------------|---|-------------------|----------------|
| Building/Department Emergency Coordinator | Tom Motel | Building | 3-1635 | 108 Hosler |
| Alternate Building/Department Emergency Coordinator | Michelle Stem | Building | 5-6511 | 112 Hosler |
| Unit Safety Officer | Rhonda Stoner | College | 5-5709 | 248 Deike |
| Unit Alternate Safety Officer | Diane Ault | College | 5-7659 | 248 Deike |
| Safety Monitors | Tom Motel | 1 st , 2 nd & Grnd Fl | 3-1635 | 108 Hosler |
| | Bob Byers | 3 rd Floor | 5-5162 | 318 Hosler |
| Door Monitors | Bob Byers | Hosler/Steidle | 5-5162 | 318 Hosler |
| | Jenna Eldreth | Hosler Front E | 3-5566 | 115 Hosler |
| | Carole Donald | Hosler Front W | 5-3437 | 110 Hosler |
| | Jaime Harter | Hosler/Deike 2 | 3-0373 | 103 Hosler |
| | Alisha Simon | Hosler/Deike G | 5-4475 | 108 Hosler |

Designated Meeting Site(s) for Building are: **IST Building Bridge**

Designated Assisted Evacuation Staging Areas for the Building are: **Stairwells located on exit plan**

Copies of this Evacuation Plan are kept in the following locations: **All labs, Hosler 108, 112, EMS College Website, Department Safety Board**

Signature of Plan Preparer

Date Prepared

Critical Operations Shut Down Procedures and Personnel Assigned These Responsibilities

Provide the following information: NONE

- Critical Operation
- Required Shutdown
- Name
- Job Title
- Work Area

Work Unit Employee Lists

| Staff | | | |
|------------------------|-----------------|----------------|----------|
| Conaway, Rachel | rla7@psu.edu | 116 Hosler | 865-3439 |
| Byers, Bob | rab31@psu.edu | 318 Hosler | 865-5162 |
| Donald, Carole | cld14@psu.edu | 110 Hosler | 865-3437 |
| Hunt, Thomas | Tah258@psu.edu | 213 Research W | 865-7472 |
| Harter, Jaime | jla20@psu.edu | 103 Hosler | 863-0373 |
| Simon, Alisha | Anw114@psu.edu | 109 Hosler | 867-5271 |
| McAfee, Morgann | mes44@psu.edu | 152 Hosler | 865-4475 |
| Motel, Tom | tjm14@psu.edu | 108 Hosler | 863-1635 |
| Hite, Judi | Jah53@psu.edu | 117 Hosler | 863-1707 |
| Eldreth, Jenna | Jme5033@psu.edu | 115 Hosler | 863-5566 |
| Stine, Missy | mlw3@psu.edu | 114 B Hosler | 865-7392 |
| Stem, Michelle | mqs1@psu.edu | 112 Hosler | 865-6511 |

| Emeritus | | | |
|-----------------------|---------------|-----------------|----------|
| Hogg, Richard | rxh19@psu.edu | 232 Hosler | 865-3802 |
| Mutmansky, Jan | j93@psu.edu | 232 Hosler | 865-3802 |
| Ramani, Raja | aws1@psu.edu | 209 Research W. | 863-1617 |
| Scaroni, Alan | aws1@psu.edu | 206 Hosler | 863-4466 |

| Faculty | | | |
|-----------------------------|-------------------|---------------------------------|----------------------|
| Adewumi Michael | m2a@psu.edu | 410 Boucke | 863-7011 |
| Algharaib, Meshal | mka110@psu.edu | 131 Hosler | 865-5945 |
| Ayala, Luis | lfay@psu.edu | 103-A Hosler | 865-4053 |
| Blumsack, Seth | sab51@psu.edu | 124 Hosler | 863-7597 |
| Brownson, Jeffrey | nanomech@psu.edu | 212 Hosler 256 MRL | 867-4227 |
| Clifford, Caroline | ceb7@psu.edu | 5 Hosler C205 CUL | 865-3046 865-8673 |
| Cole, Vera | vjc12@psu.edu | 2217 EES | 863-2502 |
| Elsworth, Derek | elsworth@psu.edu | 231 Hosler | 865-2225 |
| Emami-Meybodi, Hamid | emami@psu.edu | 152 Hosler | 863-3987 |
| Ertekin, Turgay | eur@psu.edu | 101 Hosler | 865-6082 |
| Eser, Semih | sxe2@psu.edu | 114A Hosler | 863-1392 |
| Flick, Joseph | jpf1@psu.edu | 213 R. West | 865-7472 |
| Gernand, Jeremy | jmgernand@psu.edu | 121 Hosler | 865-5861 |
| Groves, William | wag10@psu.edu | 223 Hosler | 863-1618 |
| Ityokumbul, Mku | mti1@psu.edu | 204 Hosler 221 Walker | 863-0375 865-1867 |
| Johns, Russell | rtj3@psu.edu | 119 Hosler | 865-0531 |
| Karpyn, Zuleima | ztk101@psu.edu | 151 Hosler | 863-2273 |
| Klauss, Bill | wlk13@psu.edu | 213 R. West | 865-7472 |
| Kleit, Andrew | ank1@psu.edu | 201 Hosler | 865-0711 |
| Klima, Mark | ask4@psu.edu | 115 Hosler | 863-7942 |
| Kohler, Jeffery | jk9@psu.edu | 155 Hosler | 865-9834 |
| Landry, Joel | jrl34@psu.edu | 124 Hosler | 865-9136 |
| Lei, Zhen | zlei@psu.edu | 125 Hosler | 863-0810 |
| Liu, Shimin | szl3@psu.edu | 224 Hosler | 863-4491 |
| Lo Prete, Chiara | cxl63@psu.edu | 213 Hosler | 865-0982 |
| Lueking, Angela | adl11@psu.edu | 120 Hosler | 863-6256 |
| Lueking, Angela | adl11@psu.edu | 172A MRL | 863-6256 |
| Lvov, Serguei | sxl29@psu.edu | 207 Hosler | 863-8377 |
| Lvov, Serguei | sxl29@psu.edu | 206 Res. East | 863-8377 |
| Mathews, Jonathan | jpm10@psu.edu | 126 Hosler | 863-6213 |
| Miller, Sharon | sfm1@psu.edu | 407 Academic Activities Bldg | 863-8893 |
| Morgan, Eugene | eum19@psu.edu | 156 Hosler | 863-1642 |
| Nieto, Antonio | anieto@psu.edu | 122 Hosler | 863-1620 |
| Pisupati, Sarma | sxp17@psu.edu | 126B Hosler | 865-0874 |
| Radovic, Ljubisa | lrr3@psu.edu | 205 Hosler | 863-0594 |
| Rostami, Jamal | jur17@psu.edu | 102 Hosler | 863-7606 |
| Schienze, Erich | ews11@psu.edu | 5 Hosler | 865-3046 |
| Song, Chunshan | csong@psu.edu | C211 CUL | 863-4466 |
| Vander Wal, Randy | ruv12@psu.edu | 203 Hosler | 865-5813 |
| Wang, John | john.wang@psu.edu | 202 Hosler | 865-8474 |
| Webster, Mort | mdw18@psu.edu | 123 Hosler | 863 1640 |

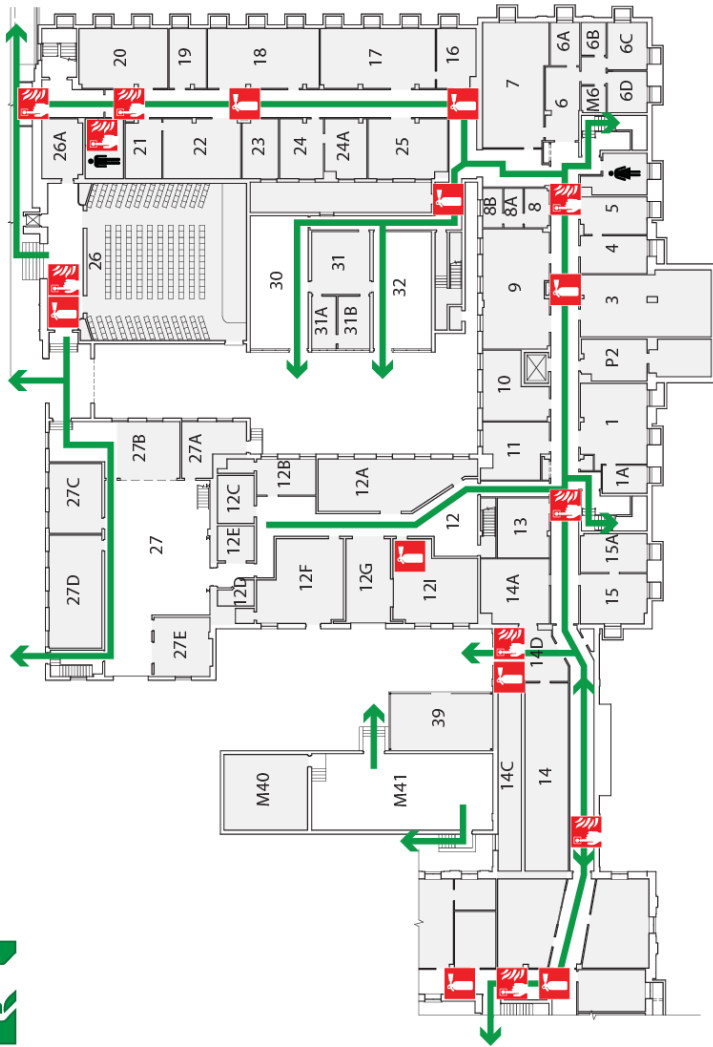
Listing of Individuals Requiring Evacuation Assistance

Provide the following information: NONE

- Name
- Work Area
- Special Needs/Concerns

Building Evacuation Floor Plan

EVACUATION ROUTE



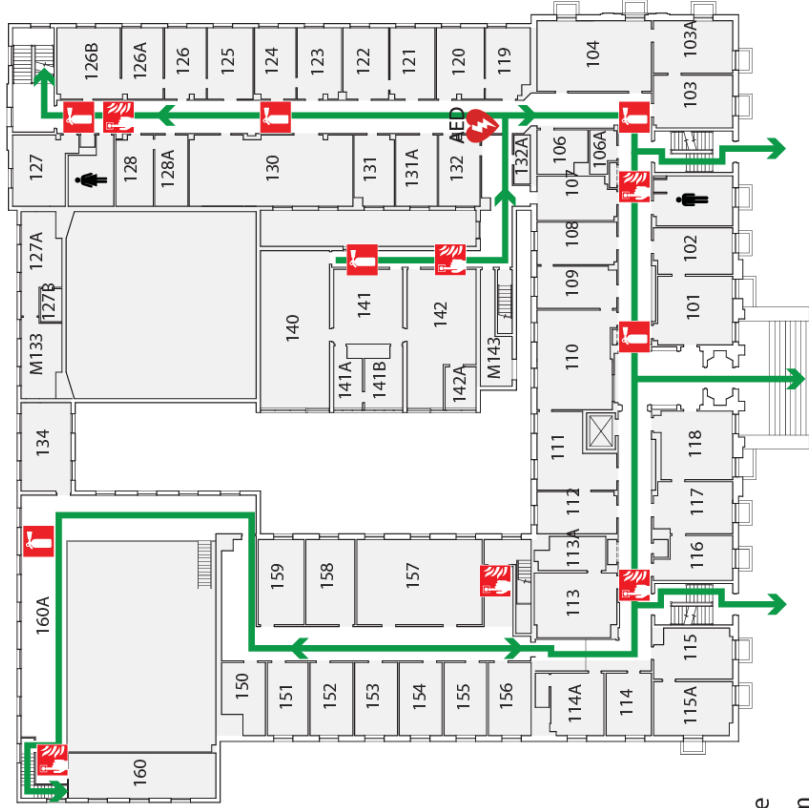
- Exit Route
- Fire Alarm
- Fire Extinguisher
- Assisted Evacuation Staging Area
- AED
- First Floor at Room 132A






DESIGNATED MEETING SITE
1ST Building Bridge





EVACUATION ROUTE

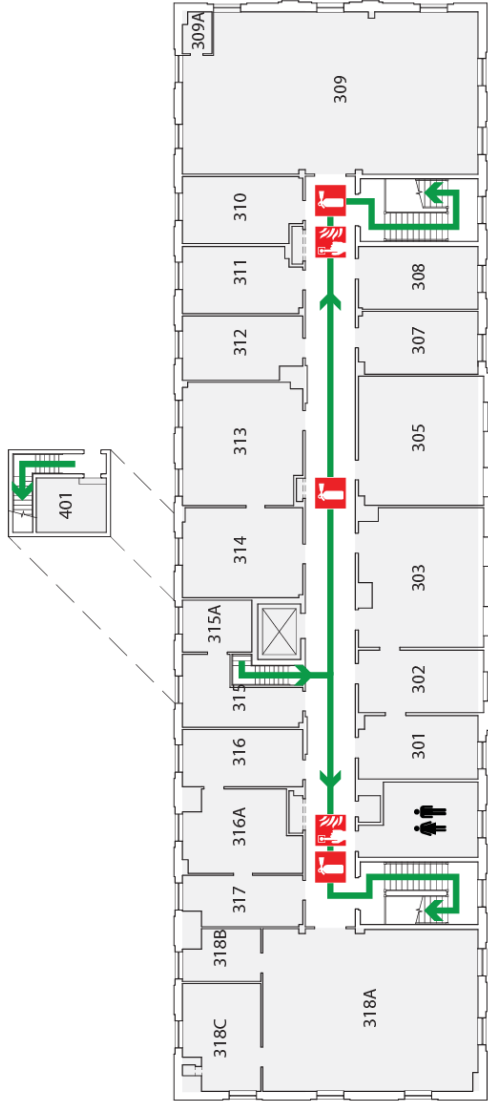


-  Exit Route
-  Fire Alarm
-  Fire Extinguisher
-  Assisted Evacuation Staging Area
-  AED at Room 132A

DESIGNATED MEETING SITE
IST Building Bridge



EVACUATION ROUTE



-  Exit Route
-  Fire Alarm
-  Fire Extinguisher
-  Assisted Evacuation Staging Area
-  AED
-  First Floor at Room 132A

DESIGNATED MEETING SITE
1ST Building Bridge

Evacuation Quick Reference Card

Emergency Contacts:

911 (Police- Fire –Ambulance)

University Police: 863-1111

Environmental Health and Safety: 865-6391

OPP Work Reception Center: 865-4731

Evacuation Contacts:

Bldg / Dept Emergency Coordinator:

Safety Monitor: Tom Motel - 863-1635

Work Unit Name

Evacuation Quick Reference

- Quickly exit in a calm manner.
- Close doors – **Do Not** lock
- Assist visitors to evacuate
- **Do Not** use elevators
- Report to designated meeting site
- **Do Not** reenter the building until advised by emergency personnel or safety monitor

Building Name designated meeting site: IST
Building Bridge