



**PennState**

**Environmental Health and Safety**

**Hosler**  
**Emergency Evacuation Plan**  
**The Pennsylvania State University**

**Emergency Phone Numbers**

**EMERGENCY (Police-Fire-Ambulance) 911**

University Police 814-863-1111

University Health Services 814-865-6556

Environmental Health and Safety (814) 865-6391

Physical Plant Work Reception Center 814-865-4731

## Building and Personnel Information

Building Name: HOSLER

Department Name(s): ENERGY and MINERAL ENGINEERING (EME)

Position	Name	Area of Responsibility	Phone Office/Cell	Office Address
Building/Department Emergency Coordinator	Tom Motel	Hosler	863-1635	6 Hosler
Alternate Building/Department Emergency Coordinator	Michelle Stem	Hosler	865-6511	112 Hosler
Unit Safety Officer	Frank Driscoll	College of EMS	867-2499	248 Deike
Unit Alternate Safety Officer	Diane Ault	College of EMS	865-7659	248 Deike
Safety Monitors	Tom Motel	1 <sup>st</sup> , 2 <sup>nd</sup> & Grnd Fl	863-1635	6 Hosler
	Bob Byers	3 <sup>rd</sup> Floor	865-5162	318 Hosler
Door Monitors	Bob Byers	Hosler/Steidle	865-5162	318 Hosler
	Rachel Conway	Hosler Front E	863-5566	116 Hosler
	Sue Hyde	Hosler Front W	863-0373	103 Hosler
	James Miller	Hosler/Deike Grnd	863-4399	6 Hosler
	Alisha Simon	Hosler/Deike 2 <sup>nd</sup>	865-4475	108 Hosler

Designated Meeting Site(s) for Building are: **Westgate Building Bridge (Formerly named IST Building)**

Designated Assisted Evacuation Staging Areas for the Building are: **Stairwells located on exit plan**

Copies of this Evacuation Plan are kept in the following locations: **All labs, Hosler 6, 112, EMS College Website, Department Safety Board**

\_\_\_\_\_  
Signature of Plan Preparer

\_\_\_\_\_  
Date Prepared

## Critical Operations Shut Down Procedures and Personnel Assigned These Responsibilities

**Provide the following information: NONE**

- Critical Operation
- Required Shutdown
- Name
- Job Title
- Work Area

### Work Unit Employee Lists

<b>Building</b>	<b>Room #</b>	<b>Last Name</b>	<b>First Name</b>	<b>Affiliation</b>
Hosler	5	Schienze	Erich	Faculty
Hosler	6	Miller	James	Staff
Hosler	6	Motel	Tom	Staff
Hosler	20/D1	Li	Zhiyuan	Grad
Hosler	20/D10	Fan	Long	Grad
Hosler	20/D11	Sang	Guijie	Grad
Hosler	20/D12	Yang	Yun	Grad
Hosler	20/D13	Li	Junjun	Grad
Hosler	20/D2	Hoydic	Corey	Grad
Hosler	20/D3	Dawuda	Ismael	Grad
Hosler	20/D4	Dawar	Kshitij	Grad
Hosler	20/D6	Hao	Duo	Grad
Hosler	20/D8	Chandna	Akshat	Grad
Hosler	24/D1	Yang Santos	Livio	Grad
Hosler	24/D3	Cai	Yuzhe	Grad
Hosler	24/D5	Song	Yibo	Grad
Hosler	24/D6	Koc	Salih	Grad
Hosler	24/D8	Al Balushi	Faras	Grad
Hosler	101	Alger	Monty	INGR
Hosler	102	Mehrabian	Amin	Faculty
Hosler	103	Hyde	Sue	Staff
Hosler	103-A	Ayala	Luis	Faculty
Hosler	107	Nottingham	Ashley	Staff
Hosler	108	Hite	Judi	Staff
Hosler	109	Simon	Alisha	Staff
Hosler	110	Johnson	Amy	Staff
Hosler	112	Stem	Michelle	Staff
Hosler	114-A	Eser	Semih	Faculty
Hosler	114-B	Stine	Missy	Staff
Hosler	115	Klima	Mark	Faculty
Hosler	116	Conaway	Rachel	Staff
Hosler	118	Scrivasan	Sanjay	Faculty

Hosler	119	Johns	Russell	Faculty
Hosler	120	Wang	Meng	Faculty
Hosler	121	Gernand	Jeremy	Faculty
Hosler	122	Rezaee	Mohammed	Faculty
Hosler	123	Webster	Mort	Faculty
Hosler	124	Blumsack	Seth	Faculty
Hosler	124	Landry	Joel	Faculty
Hosler	125	Lei	Zhen	Faculty
Hosler	126	Matthews	Jonathan	Faculty
Hosler	126-A	Bhattacharyya	Sekhar	Faculty
Hosler	126-B	Pisupati	Sarma	Faculty
Hosler	127/D1	Ahn	Eunnam	Grad
Hosler	127/D2	Zhi	Sheng	Grad
Hosler	127/D3	Lou	Xuanqing	Grad
Hosler	127/D5	Yen	Shao-Hsien	Grad
Hosler	127/D7	Fan	Jiayi	Grad
Hosler	131	Tayari	Farid	Faculty
Hosler	131A/D1	Tran	Kien	Grad
Hosler	131A/D2	Liu	Rui	Grad
Hosler	131A/D3	Sant'anna Garcez Norbrega	Jonathan	Grad
Hosler	131A/D4	Wang	Zhicheng	Grad
Hosler	132/D1	Pham	An	Grad
Hosler	132/D2	Wu	Yucheng	Grad
Hosler	132/D3	Hohl	Cody	Grad
Hosler	132/D4	Perla	Jospeh	Grad
Hosler	132/D5	Vaziri Hassas	Behzad	Grad
Hosler	150/D2	Sagzhanov	Daulet	Grad
Hosler	150/D3	Nguyen	Kien	Grad
Hosler	150/D4	Liu	Zizhong	Grad
Hosler	151	Karpyn	Zuleima	Faculty
Hosler	152	Emami-Meybodi	Hamid	Faculty
Hosler	154	King	Gregory	Faculty
Hosler	155	Kohler	Jeffery	Faculty
Hosler	156	Mehrabian	Amin	Faculty
Hosler	156	Morgan	Eugene	Faculty
Hosler	158	Ertekin	Turgay	Emeritus
Hosler	159/D1	Abboud	Hafsa	Grad
Hosler	159/D3	Cronin	Michael	Grad
Hosler	159/D4	Magzymov	Daulet	Grad
Hosler	159/D5	Khodaparast	Pooya	Grad
Hosler	159/D6	Tawfik	Miral	Grad
Hosler	201	Kleit	Andrew	Faculty
Hosler	202	Wang	John	Faculty
Hosler	203	Vander Wal	Randy	Faculty
Hosler	204	Karamalidis	Thanasis	Faculty
Hosler	205	Radovic	Ljubisa	Faculty
Hosler	206	Dahi	Arash Taleghani	Faculty
Hosler	207	Lvov	Serguei	Faculty

Hosler	212	Brownson	Jeffrey	Faculty
Hosler	212	Blumsack	Seth	Faculty
Hosler	213	Lo Prete	Chiara	Faculty
Hosler	213A/D1	Xiu	Lihe	Grad
Hosler	213A/D2	Purswani	Prakash	Grad
Hosler	213A/D4	Zhang	Fengyuan	Grad
Hosler	213A/D5	Zhang	Wei	Grad
Hosler	216/D1	Wang	Ruiqi	Grad
Hosler	216/D2	Joon	Shams	Grad
Hosler	216/D3	Liu	Ang	Grad
Hosler	216/D4	Li	Xuanchi	Grad
Hosler	216/D5	Niu	Fangya	Grad
Hosler	216/D6	Wang	Jiehao	Grad
Hosler	216/D7	Agrawal	Sidharth	Grad
Hosler	216/D8	Li	Yijie	Grad
Hosler	216/D11	Valqui Ordonez	Brayam	Grad
Hosler	216/D14	Banan	Zoya	Grad
Hosler	216/D15	Ren	Zihan	Grad
Hosler	216/D16	Ramchandran	Vignesh	Grad
Hosler	223	Groves	William	Faculty
Hosler	224	Liu	Shimin	Faculty
Hosler	228/D1	Sengupta	Arupananda	Grad
Hosler	228/D2	Zhi	Wei	Grad
Hosler	228/D3	Li	Ziyan	Grad
Hosler	228/D4	Soares	Paulo	Grad
Hosler	228/D6	Xiao	Dahcheng	Grad
Hosler	228/D8	Li	Daiwei	Grad
Hosler	228/D10	Gendrue	Nathan	Grad
Hosler	228/D12	Wasserman	Ian	Grad
Hosler	228/D13	Su	Wenjing	Grad
Hosler	228/D14	Alzaabi	Abdulla	Grad
Hosler	230/D2	Zhang	Tianji	Grad
Hosler	230/D3	Zhang	Boning	Grad
Hosler	230/D5	Zhang	Yiming	Grad
Hosler	230/D6	Wei	Tianyuan	Grad
Hosler	230/D7	Lee	Lu	Grad
Hosler	230A/D3	Yu	Jiayi	Grad
Hosler	230A/D4	Liu	Keru	Grad
Hosler	231	Elsworth	Derek	Faculty
Hosler	232	Hogg	Richard	Emeritus
Hosler	232	Mutmansky	Jan	Emeritus
Hosler	302	Gu	Xin	Post-Doc
Hosler	308	Liermann	Laura	Researcher
Hosler	310	Gonzales	Matthew	Research Assistant
Hosler	315	Marcon	Virginia	Grad
Hosler	318	Byers	Bob	Staff

## Listing of Individuals Requiring Evacuation Assistance

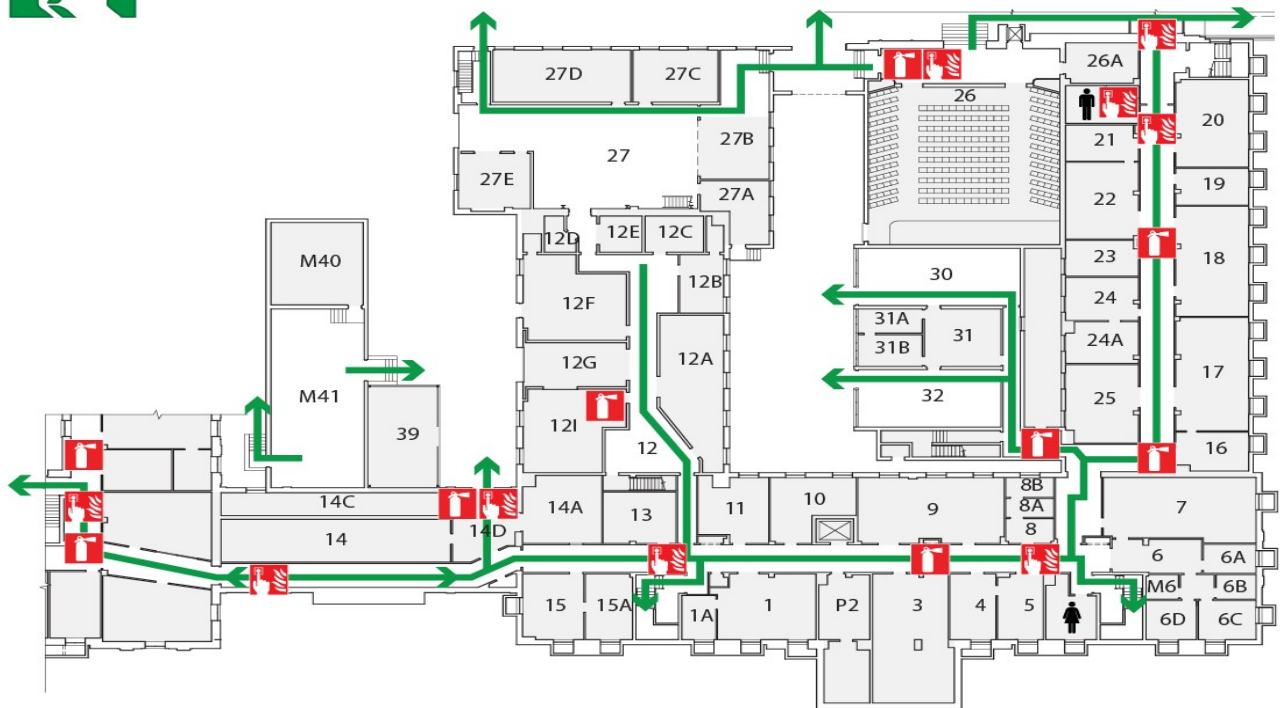
Provide the following information: NONE

- Name
- Work Area
- Special Needs/Concerns

## Building Evacuation Floor Plan



## EVACUATION ROUTE

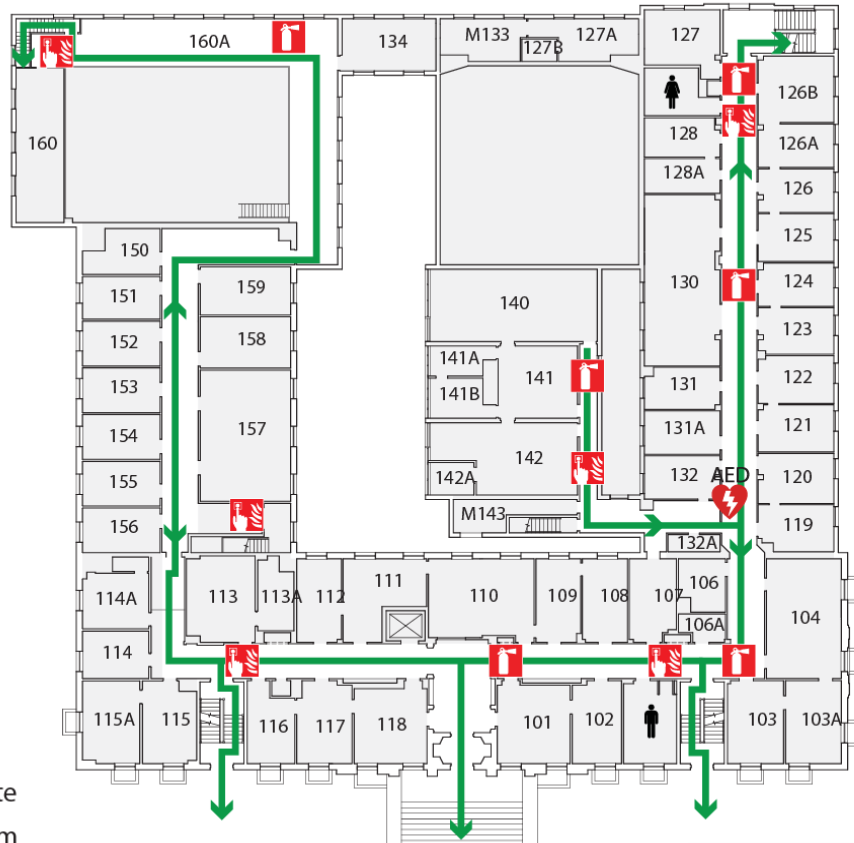


- ← Exit Route
- Fire Alarm
- Fire Extinguisher
- Assisted Evacuation Staging Area
- First Floor at Room 132A

DESIGNATED MEETING SITE  
IST Building Bridge



# EVACUATION ROUTE



- ← Exit Route
- Fire Alarm
- Fire Extinguisher
- Assisted Evacuation Staging Area
- AED at Room 132A

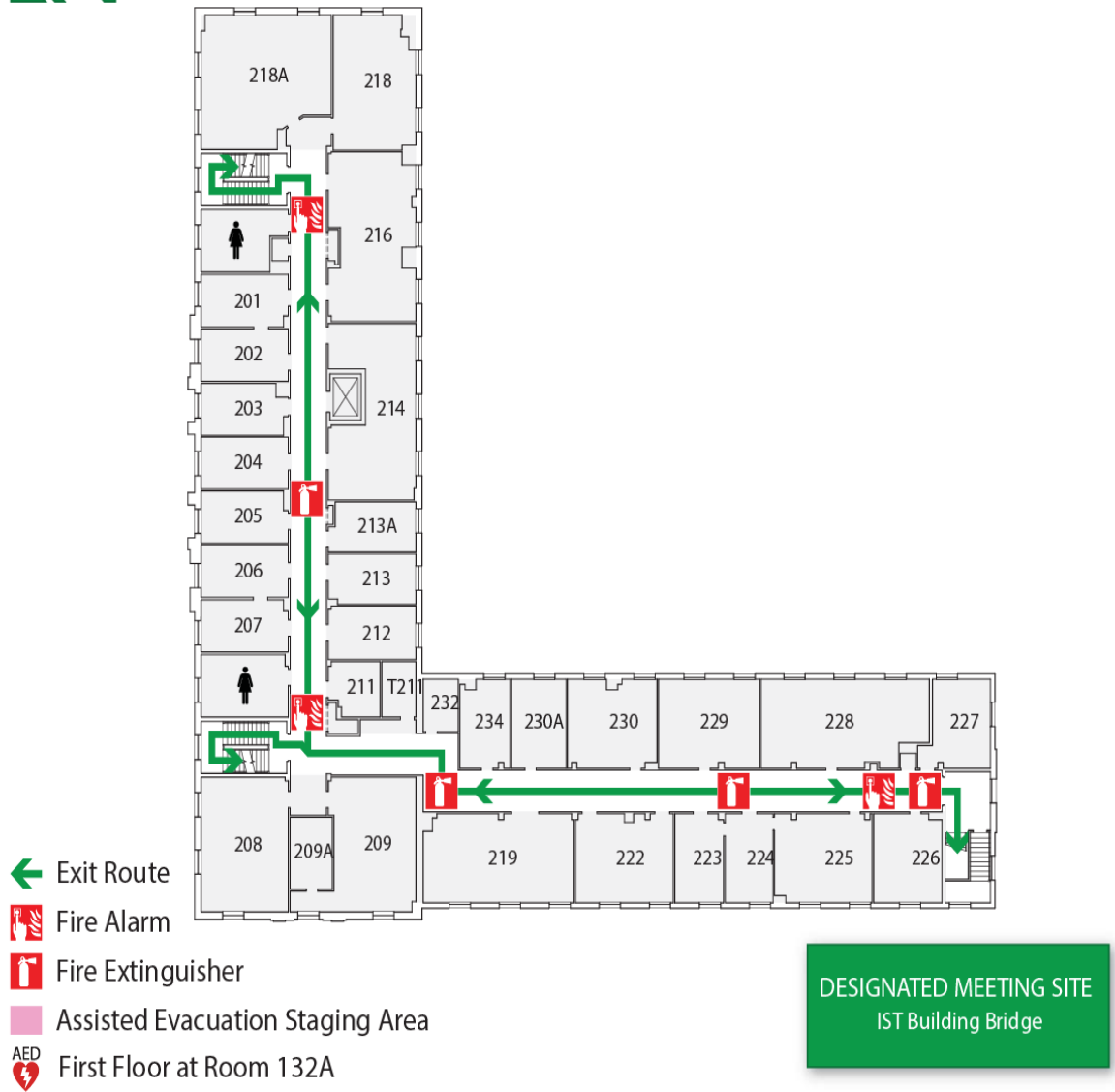
DESIGNATED MEETING SITE  
IST Building Bridge



# Hosler - First Floor



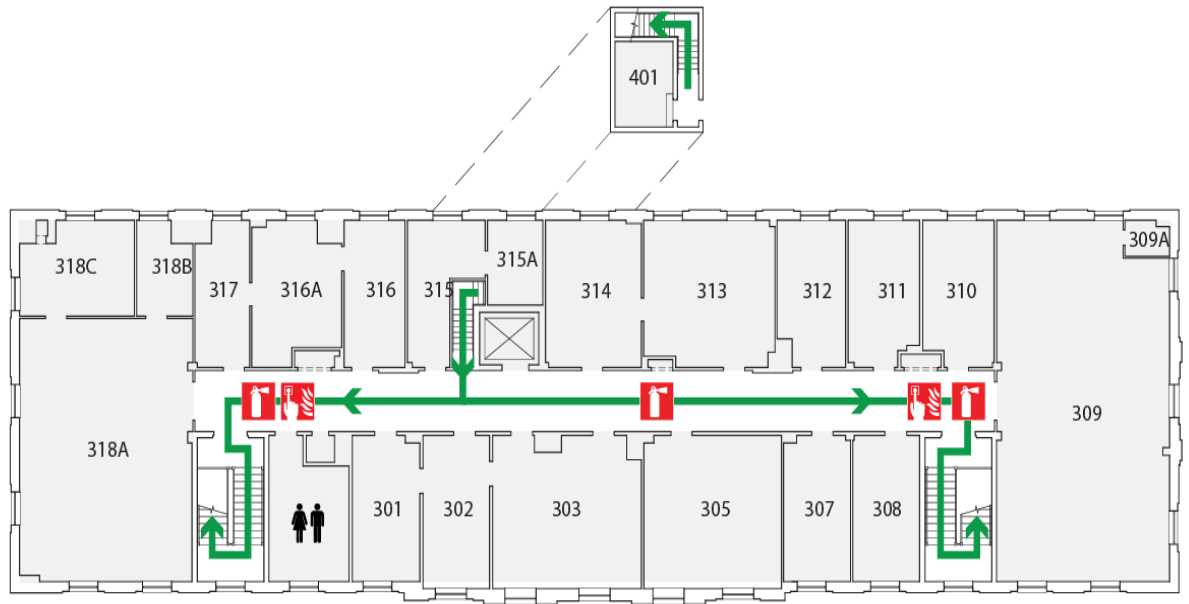
# EVACUATION ROUTE







# EVACUATION ROUTE



- Exit Route
- Fire Alarm
- Fire Extinguisher
- Assisted Evacuation Staging Area
- AED First Floor at Room 132A

DESIGNATED MEETING SITE  
IST Building Bridge



## Hosler - Third Floor

## Evacuation Quick Reference Card

**Emergency Contacts:**

911 (Police- Fire –Ambulance)  
University Police: 863-1111  
Environmental Health and Safety: 865-6391  
OPP Work Reception Center: 865-4731

**Evacuation Contacts:**

Bldg / Dept Emergency Coordinator:

Safety Monitor: Tom Motel - 863-1635

**Work Unit Name**

Evacuation Quick Reference

- Quickly exit in a calm manner.
- Close doors – **Do Not** lock
- Assist visitors to evacuate
- **Do Not** use elevators
- Report to designated meeting site
- **Do Not** reenter the building until advised by emergency personnel or safety monitor

**Building Name** designated meeting site: IST  
Building Bridge