

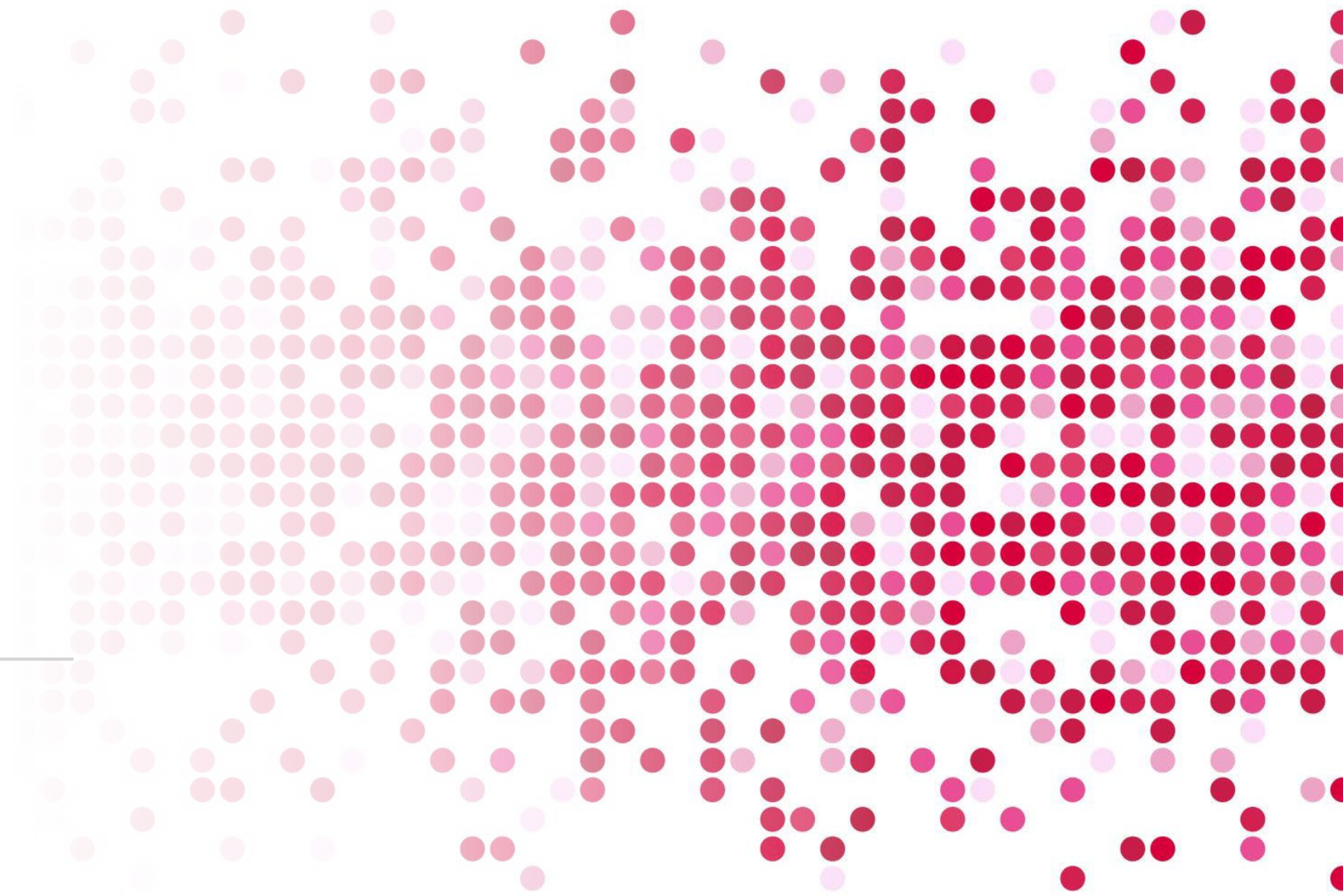


Generative AI at Penn State

Chris Millet

Senior Director,

World Campus Learning Design

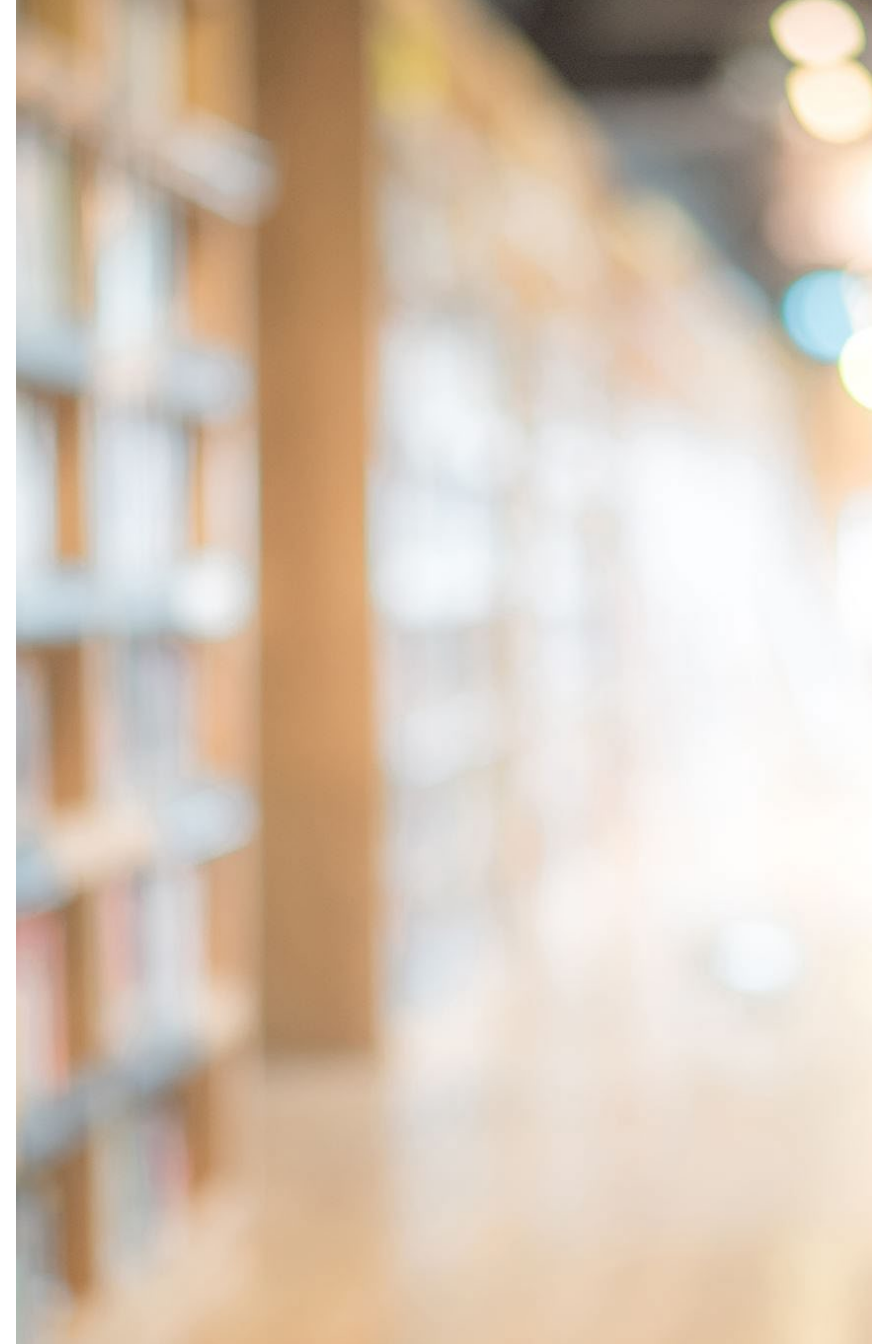


Generative AI Current State

- **Working Group established October 2022**
- **Tools Evolving**
 - Many new proprietary and open LLMs
 - **Microsoft CoPilot** - \$30/month
 - **Claude 2** – free beta, Constitutional AI
 - **ChatGPT Plus** – plugins enable data analysis, internet access
 - Bulk of training data still frozen in time
- **AI safety and emerging regulation**
 - Several open cases about AI and copyright
 - Congress drafting new rules on AI (competitiveness vs. safety)
 - *Is ingestion of copyrighted works in training a copyright violation?*
 - *Can you copyright AI-generated works? (No)*
- **Nature of AI and impact on society is open question**
 - Impact on productivity and learning
 - reasoning ability

Challenges

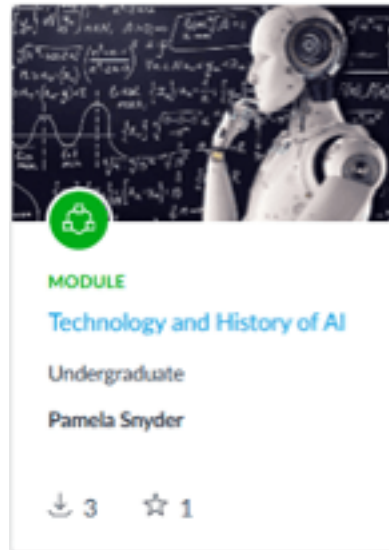
- **University Procurement Policy**
 - ChatGPT to be designated as “tool” not “courseware”
 - AD95 – Data Sensitivity
- **Academic Integrity**
 - Detectors don’t work
 - Proctoring is expensive
 - Establishing expectations with students is best policy
- **Many instructional strategies are discipline-specific**
 - Type of writing (technical, creative, scholarly, business, argumentation)
 - Coding and data analysis
 - Research
- **Equity**
 - Inequity in access, understanding
 - GPT 3.5 (free) vs GPT4 (paid) vs Claude, CoPilot, etc.



aiai.psu.edu

- Canvas Modules – use as AI orientation
- Develop foundation for appropriate and effective use of AI
- Begin to establish norms with student

AI Literacy Unit



MODULE

Technology and History of AI

Undergraduate

Pamela Snyder

↓ 3 ☆ 1



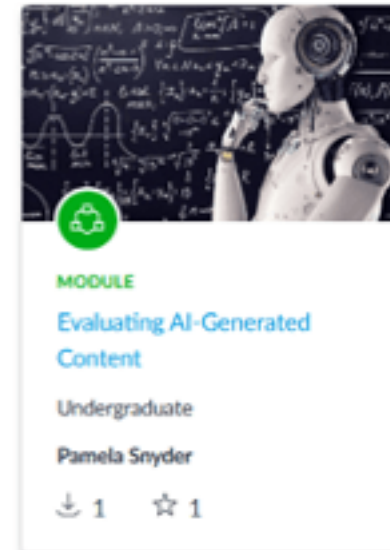
MODULE

The Ethical Use of AI in Education

Undergraduate

Pamela Snyder

↓ 1 ☆ 1



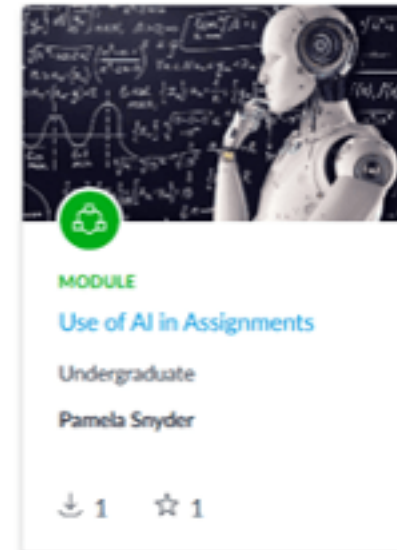
MODULE

Evaluating AI-Generated Content

Undergraduate

Pamela Snyder

↓ 1 ☆ 1



MODULE

Use of AI in Assignments

Undergraduate

Pamela Snyder

↓ 1 ☆ 1

Improving Student Use of AI

- Idea generation and elaboration*
- Knowledge checks, feedback, iterative learning
- Writing partner (draft, summarize, restate, reformat)*
- Problem solving with data analysis and coding
- **Prompt Engineering** – go beyond simple prompts

* Submit intermediate deliverables, cite AI use



Research Integrity

- Upcoming AI Literacy Module
- Research Misconduct – plagiarism and fabrication
- Sensitive data and privacy
- Considerations for publishing



What You Can Do Now!

- Discuss specific strategies within your **disciplinary communities**
- **Review all assignments** – consider revisions (try it out in 1-2 assignments)
- **Communicate explicit position on AI to students** (in syllabi and assignment instructions)
- **Work with Dutton Institute** to evaluate your assignments



Save the Date!

Join Chris Millet and the Dutton Institute
for our upcoming workshop on generative
AI!

October 18, 2023, 12 – 1 pm

Stay tuned for location and more details!



Consultations on AI for your class?

Contact Stevie Rocco – stevier@psu.edu to get set up for a personal consultation with a learning designer!