



PennState

Environmental Health and Safety

Academic Activities
Emergency Evacuation Plan
The Pennsylvania State University

Emergency Phone Numbers

EMERGENCY (Police-Fire-Ambulance) 911

University Police 814-863-1111

University Health Services 814-865-6556

Environmental Health and Safety (814) 865-6391

Physical Plant Work Reception Center 814-865-4731

The Pennsylvania State University Emergency Evacuation Plan

Building and Personnel Information

Building Name: Academic Activities

Department Name(s): EMS Energy Institute, Theater Arts, Library Services

Position	Name	Area of Responsibility	Phone Office/ Cell	Office Address
Building/Department Emergency Coordinator	Valerie Narehood	Academic Activities	865-7586	510 Academic Activities
Alternate Building/Department Emergency Coordinator	Katie Roundtree	Academic Activities	863-5733	124 Borland Building
Unit Safety Officer	Frank Driscoll	College of EMS	867-2499	248 Deike Building
Unit Alternate Safety Officer	Diane Ault	College of EMS	865-7659	248 Deike Building
Unit Safety Officer	Ron Wasco	2 nd and 4 th Floor	863-5384	218 Academic Projects Building
Unit Alternate Safety Officer	Brad Maben	2 nd and 4 th Floor	865-3899	413 Academic Activities
Safety Monitor	Brad Maben	2 nd Floor	865-3899	413 Academic Activities
Safety Monitor	Tim Stecko	4 th Floor	865-8406	403 Coal Utilization Lab

Designated Meeting Site(s) for Building are: **Across Bigler Road on Sidewalk If weather is bad, move to lobby atrium in Academic Projects**

Designated Assisted Evacuation Staging Areas: **Top of stairwell outside of room 401, Bottom of stairwell outside of room 205**

Copies of this Evacuation Plan are kept in the following locations - **Shelves in 405 Academic Activities**

Signature of Plan Preparer

08/05/19

Date Prepared

Critical Operations Shut Down Procedures and Personnel Assigned These Responsibilities

Provide the following information:

- Critical Operation - Research Boiler and Fluidized Bed Combustor
- Required Shutdown - Gas and/or other Research Boiler fuel sources
- Name - Brad Maben or Ron Wasco
- Job Title - Senior Research Technician
- Work Area - 201 Academic Activities.

Work Unit Employee Lists

Building	Room #	Last Name	First Name
AAB	201	Wasco	Ronnie
AAB	202	Wasco	Ronnie
AAB	203	Wasco	Ronnie
AAB	204	Karpyn	Zuleima
AAB	205	Johns	Russell
AAB	401	Yang	Xiaojing
AAB	401	Hassas	Behzad
AAB	401	Vacant	
AAB	401	Vacant	
AAB	401	Vacant	
AAB	401	Vacant	
AAB	403	Stecko	Tim
AAB	404	Pisupati	Sarma
AAB	406	Rezaee	Mohammad
AAB	407	Vacant	
AAB	409	Maben	Brad
AAB	410	Banik	Shubhadeep
AAB	410	Jammulamadaka	Hari
AAB	410	Song	Chenpeng
AAB	410	Kennedy	James
AAB	410	Tao	Honghua
AAB	410	Karri	Kashyap
AAB	410	Zhao	Hongze
AAB	410	Zhao	Xiang
AAB	411	Karpyn	Zuleima
AAB	412	Enab	Khaled
AAB	412	Peng	Cheng
AAB	413	Halleck	Phil
AAB	413	Ryan	Tim
AAB	414	Painter	Paul
AAB	415	Karpyn	Zuleima
AAB	416	Karpyn	Zuleima
AAB	417	Karpyn	Zuleima
AAB	420	Wasco	Ronnie

Provide the following information for each Safety Monitor:

- Ron Wincek, 4th floor
- Brad Maben, 2nd floor

Listing of Individuals Requiring Evacuation Assistance

None

Provide the following information:

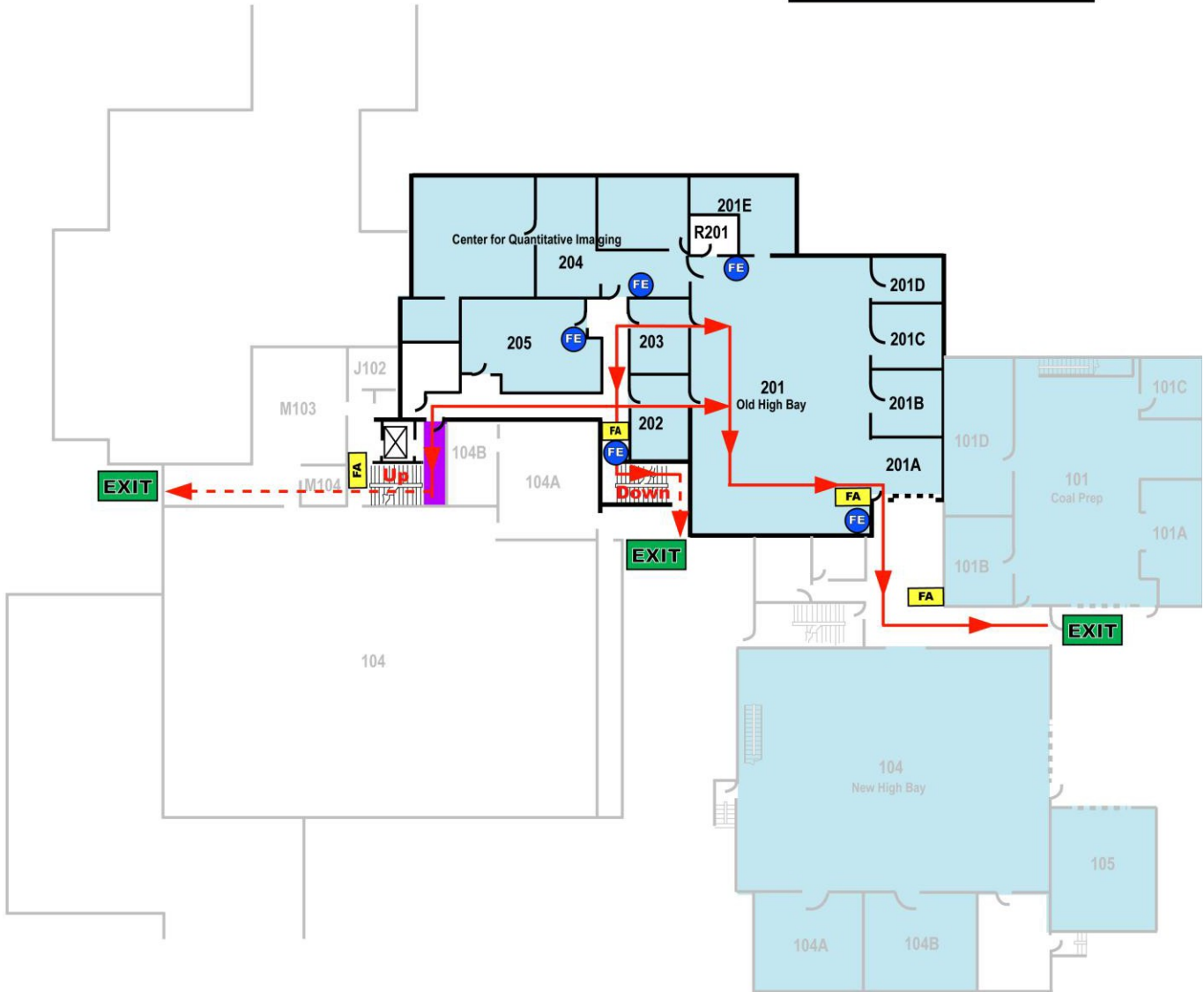
- Name
- Work Area
- Special Needs/Concerns

Building Evacuation Floor Plan

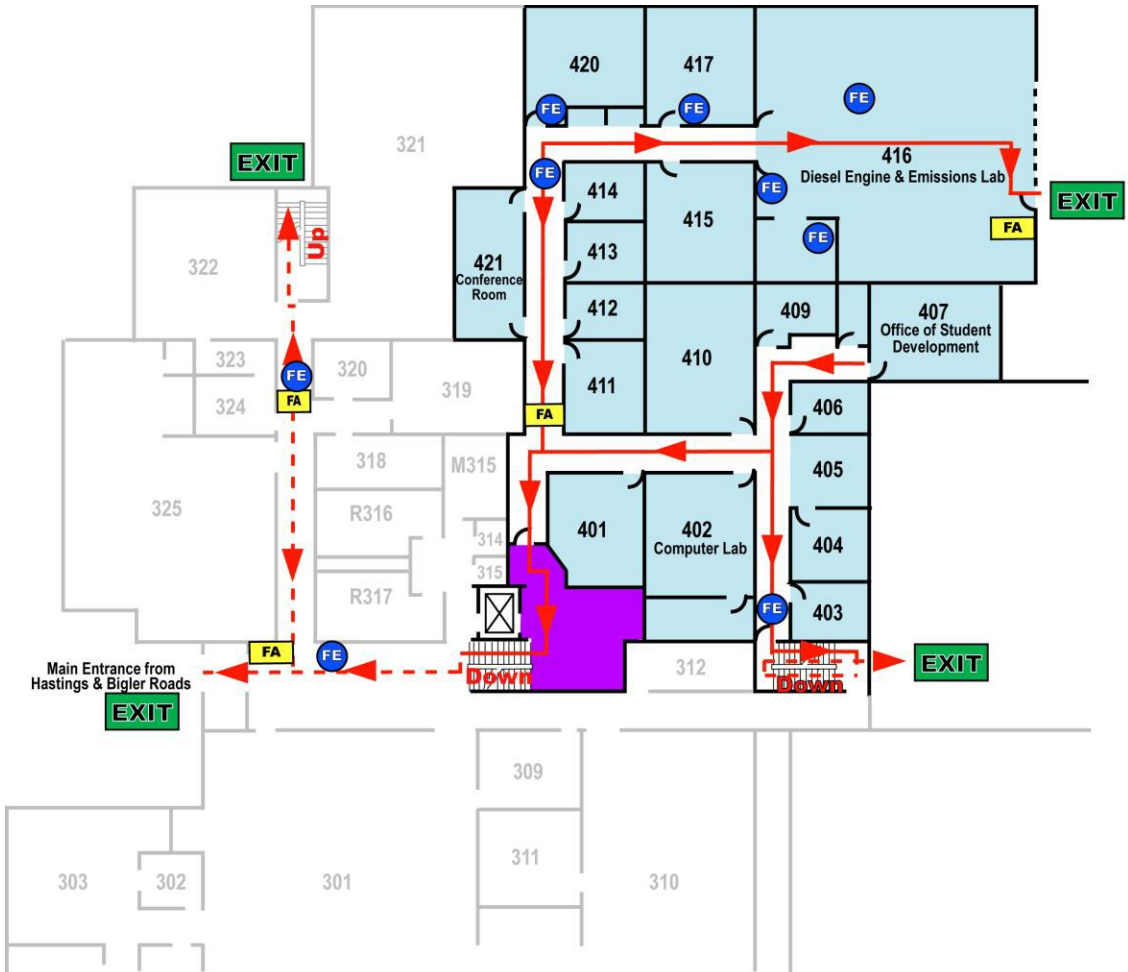
Academic Activities 2nd Floor

DESIGNATED MEETING SITE
Academic Activities 3rd Floor Lobby

	Exit Route
	Fire Alarm
	Fire Extinguisher
	Area of Refuge



Academic Activities 4th Floor



DESIGNATED MEETING SITE
Academic Activities 3rd Floor Lobby

	Exit Route
	Fire Alarm
	Fire Extinguisher
	Area of Refuge

Evacuation Quick Reference Card

Emergency Contacts:

911 (Police- Fire –Ambulance)
University Police: 863-1111
Environmental Health and Safety: 865-6391
OPP Work Reception Center: 865-4731

Evacuation Contacts:

Bldg / Dept Emergency Coordinator: Todd King

Safety Monitors: Brad Maben and Tim Stecko

Work Unit Name

Evacuation Quick Reference
- Quickly exit in a calm manner.
- Close doors – **Do Not** lock
- Assist visitors to evacuate
- **Do Not** use elevators
- Report to designated meeting site
- **Do Not** reenter the building until advised by
emergency personnel or safety monitor

Building Name designated meeting site: Across
Bigler Road on Sidewalk. If weather is bad,
move to lobby atrium in Academic Projects