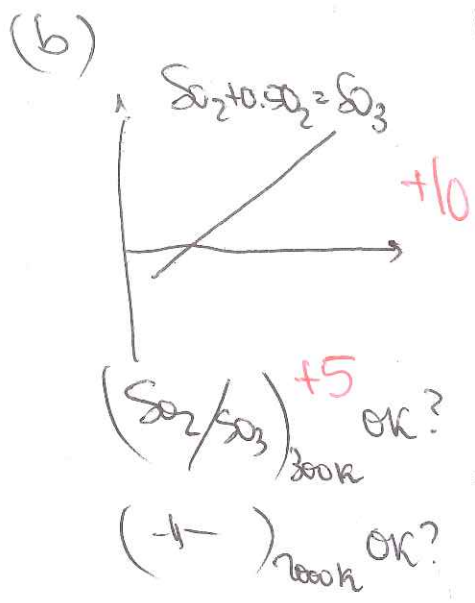


① 35%

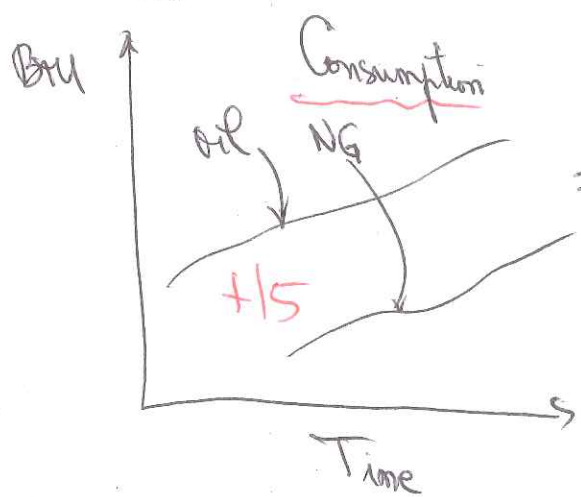
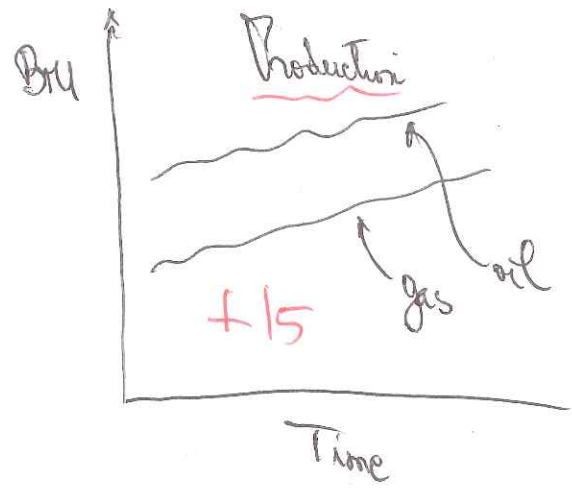
Σ: _____

(a) Substit coal assumptions
OK? +5
↓
ppm SO₂ reasonable? +5



(c) ppm (a) ↑ +10
ppm SO₂ >? ppm SO₃ (b)

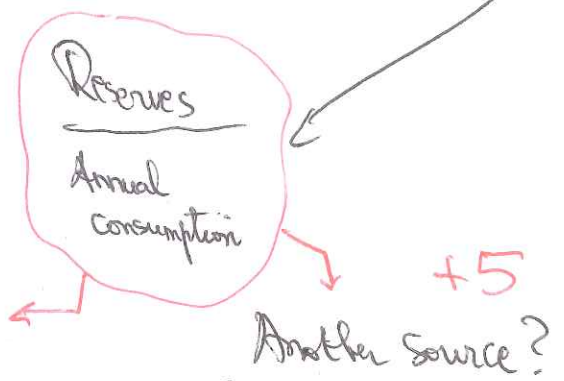
② 35%



Comments
⇒ (i) C-footprint +5
(ii) switch to renewables?

③ 30%

Pro-fracking +8
Con-fracking +8



⇒ Nature graph message? +4
Comparison with primary source (IEA)? +2
Any quantitative (dis)agreement? +3